



Innovation > Technology > Future

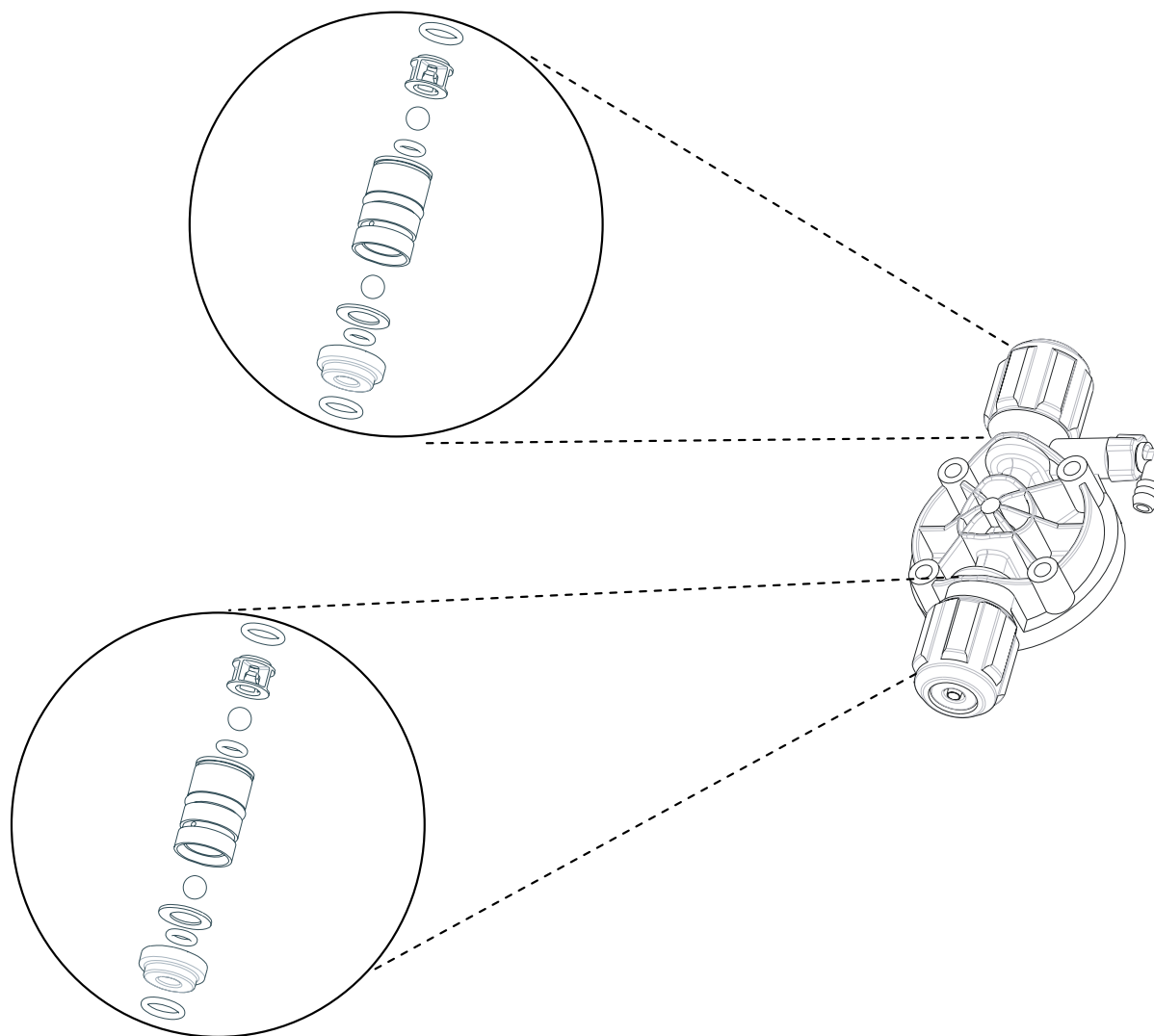


INVIKTA SERIES



Innovation > Technology > Future

Hydraulic features



Main features

- It is a dosing pump specially designed for a small dosage.
- Its weight and small size make it a product that is especially easy to handle and install under any conditions.
- IP65 protection degree, protected against jets of water.
- Completely made of plastic and durable even in particularly aggressive environments.
- Complete installation kit with wall mounting bracket included.



INVIKTA SERIES

Main features

Manual priming valve

Operation state LED:

- flashing with solenoid
- slow flashing without dosage (operation stop)
- Fast flashing without dosage (level alarm)

Standard power supply 90-230 Vac
Upon request 20-60 Vac

Double mounting way:

- Directly on the pump
- By mounting bracket

Flow rate manual adjustment
from 0 (operation stop) to 100%

The pump is equipped
of level probe connection





INVIKTA SERIES

Pump coding					
Model	Type	Power supply	Type of head	Installation kit	Optional
KCL	633	N (100-230 Vac)	VF	W	00

Technical features					
Type	Flow rate (l/h)	Pressure (bar)	Connections (IN/OUT)	Strokes/min	
633	5	5	4/6	180	
632	2	7	4/6	100	

Wetted materials					
Head Type	Pump head	Ball valves	Seals and valves	Diaphragm	
VF	PVC	Pyrex	FPM	PTFE	
VE	PVC	Pyrex	EPDM	PTFE	